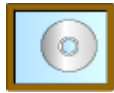




www.anetac.com

medi@expertTM series 008



Working with medi@mirror : part 1

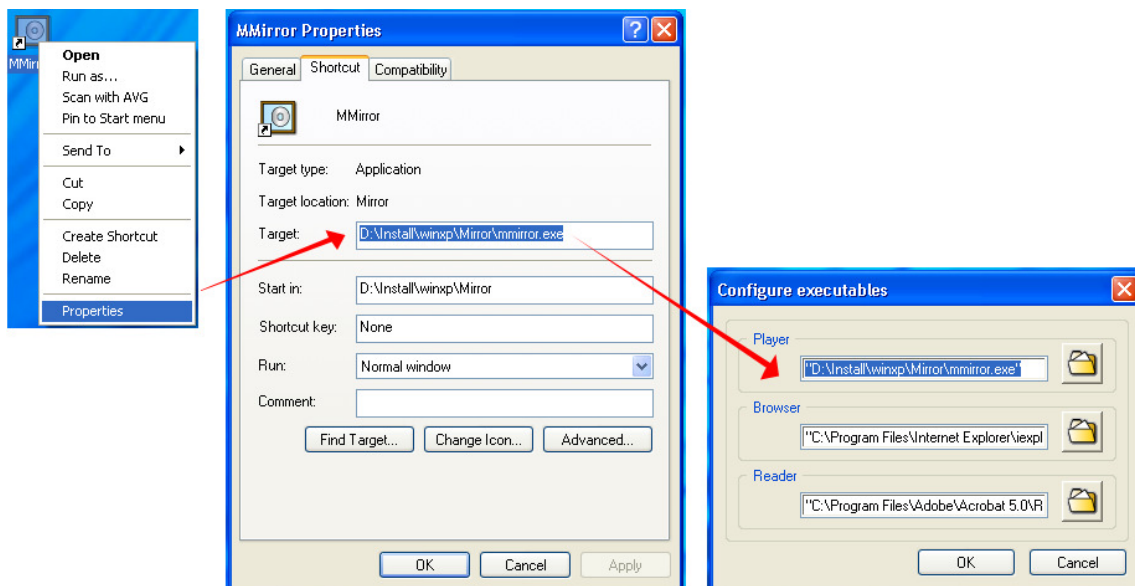
We wrote this program not only to address the need for a media player in our suite of products, but also to provide media authors with a small and versatile media distribution application to display their work.

Requirements

medi@mirror – Media player/distribution tool by Anetac Software.

How to configure medi@morph to use medi@mirror

This is done by using the medi@morph *Configure / Exec / Player* pull down menu option. In this dialog box, you simply enter the full path and executable name to the medi@mirror program in the player input entry.



You can figure out the install path for medi@mirror by right clicking on the medi@mirror desktop shortcut and choosing the “properties” option. The properties menu will have the path to the medi@mirror executable (mmirror.exe) in the “Target:” entry box.

If you want to configure medi@maze to work with medi@mirror, follow the same procedure. Both programs have the same configuration menu. Only the first program that invokes medi@mirror will be able to shut it down.

Creating a media file to use with medi@mirror

Since you have a limited amount of space to play with on a blank media disc, it makes sense to compress your final media file (the one you want to distribute) so that you can get the most playtime from the space available.

Compression is achieved by establishing and implementing mathematical relationships between video frames and/or audio samples. The aim is to remove redundant data or information in a media file in order to reduce the file size.

You can change the size of your media files using medi@morph or medi@maze by reducing the Motion JPEG frame quality of your output file using the *Configure / Settings / Quality* pull down menu option. You can also export your projects to MPEG-1 and MPEG-2 video using medi@maze.

You may want to look into more elaborate and/or portable compression schemes such as MPEG, DIVX or WMV in order to fit more information on your disc, or to ensure that most people can play your media files.

This is the end of working with medi@mirror, part 1. Here we gave a brief introduction, which covers the configuration and use of the program. We hope this information has been useful. Next, we’re going to look at how you can use medi@mirror to enhance your Video CD playback capabilities.

Anetac Design Team - Contact address: feedback@anetac.com